



# Placentia-Yorba Linda Unified School District

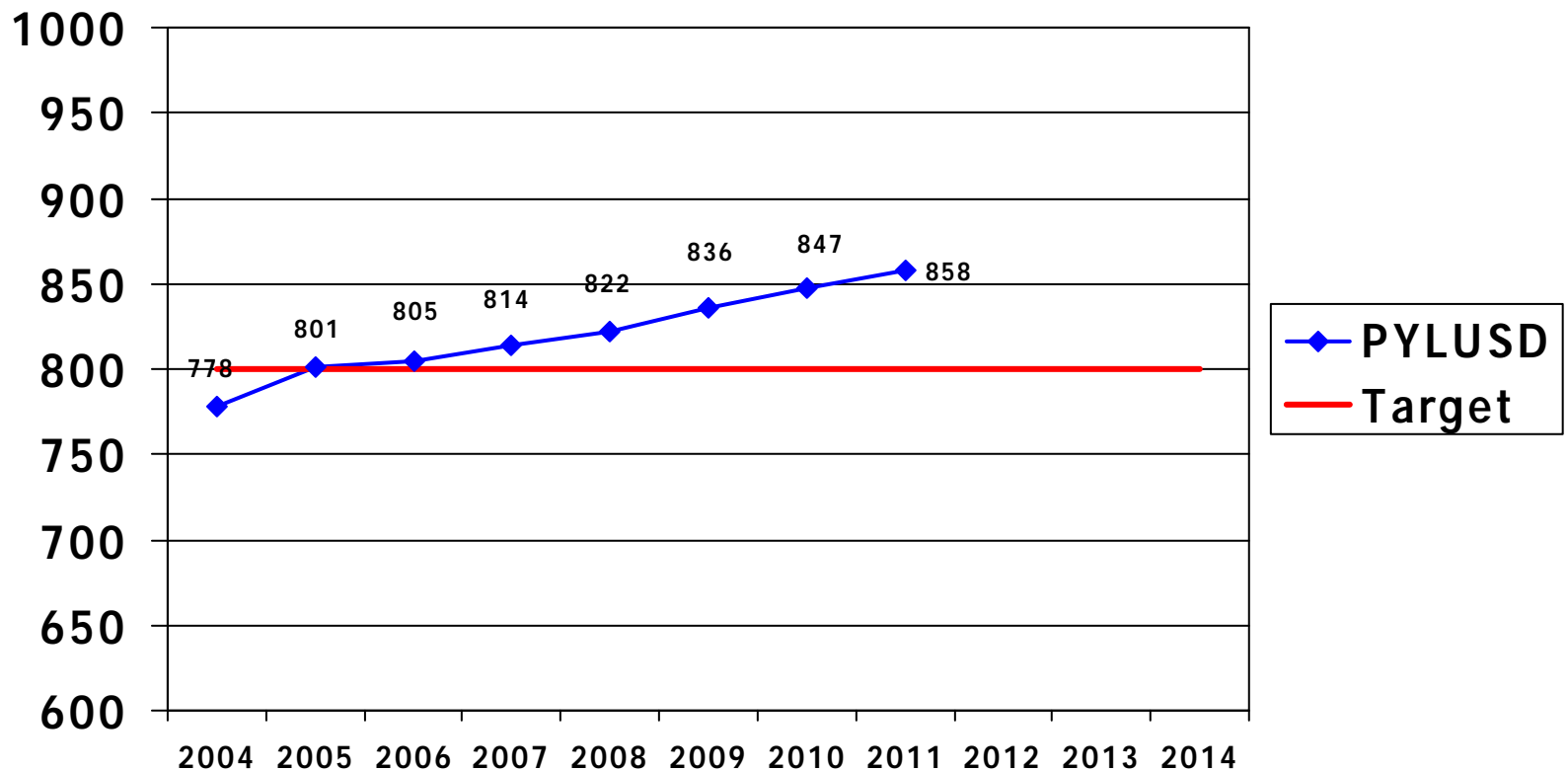
---

California Standards Test (CST)  
Results

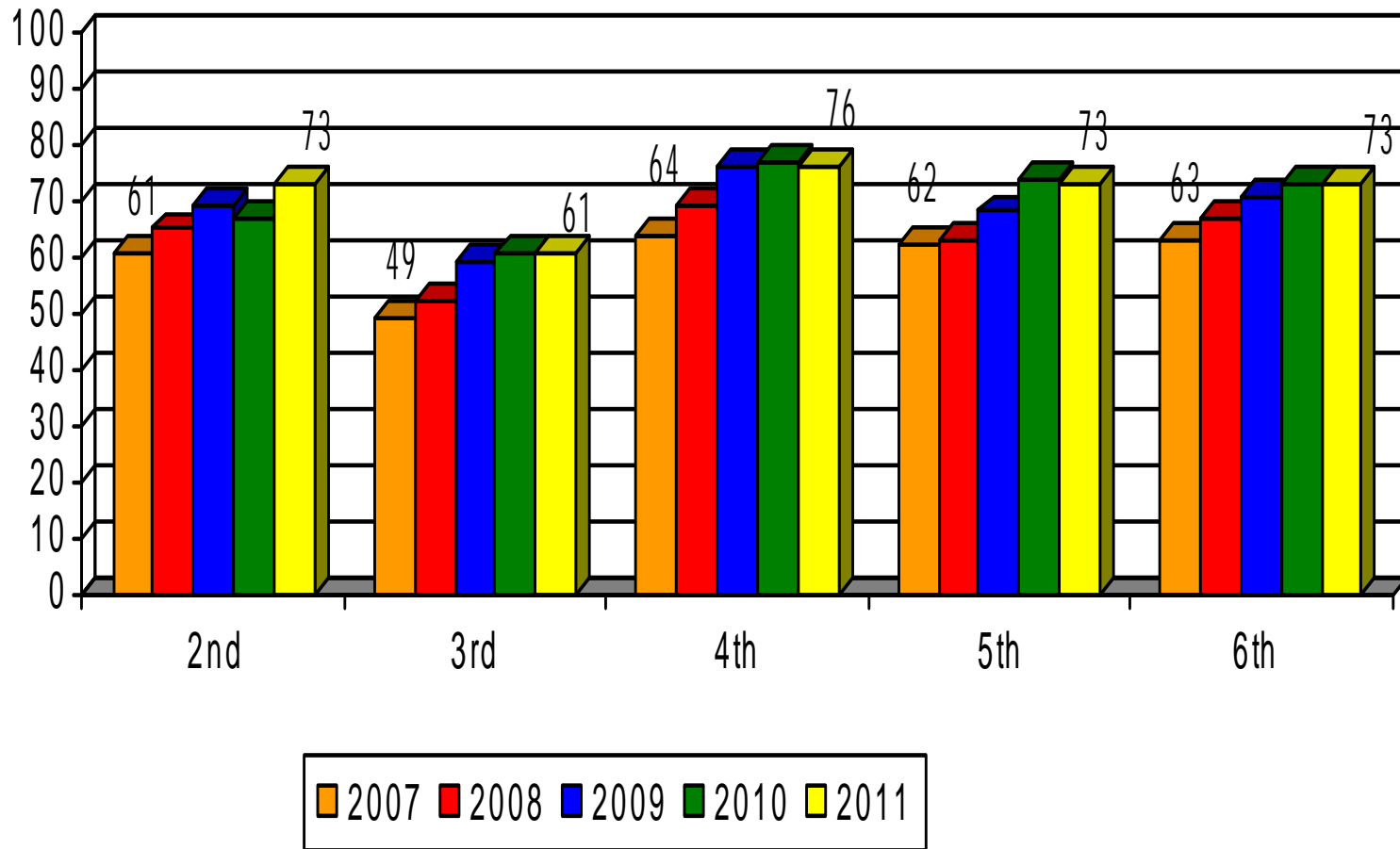
Spring 2007 through Spring 2011

# District Academic Performance Index (API)

*Estimated for 2011 – will update on September 1st*

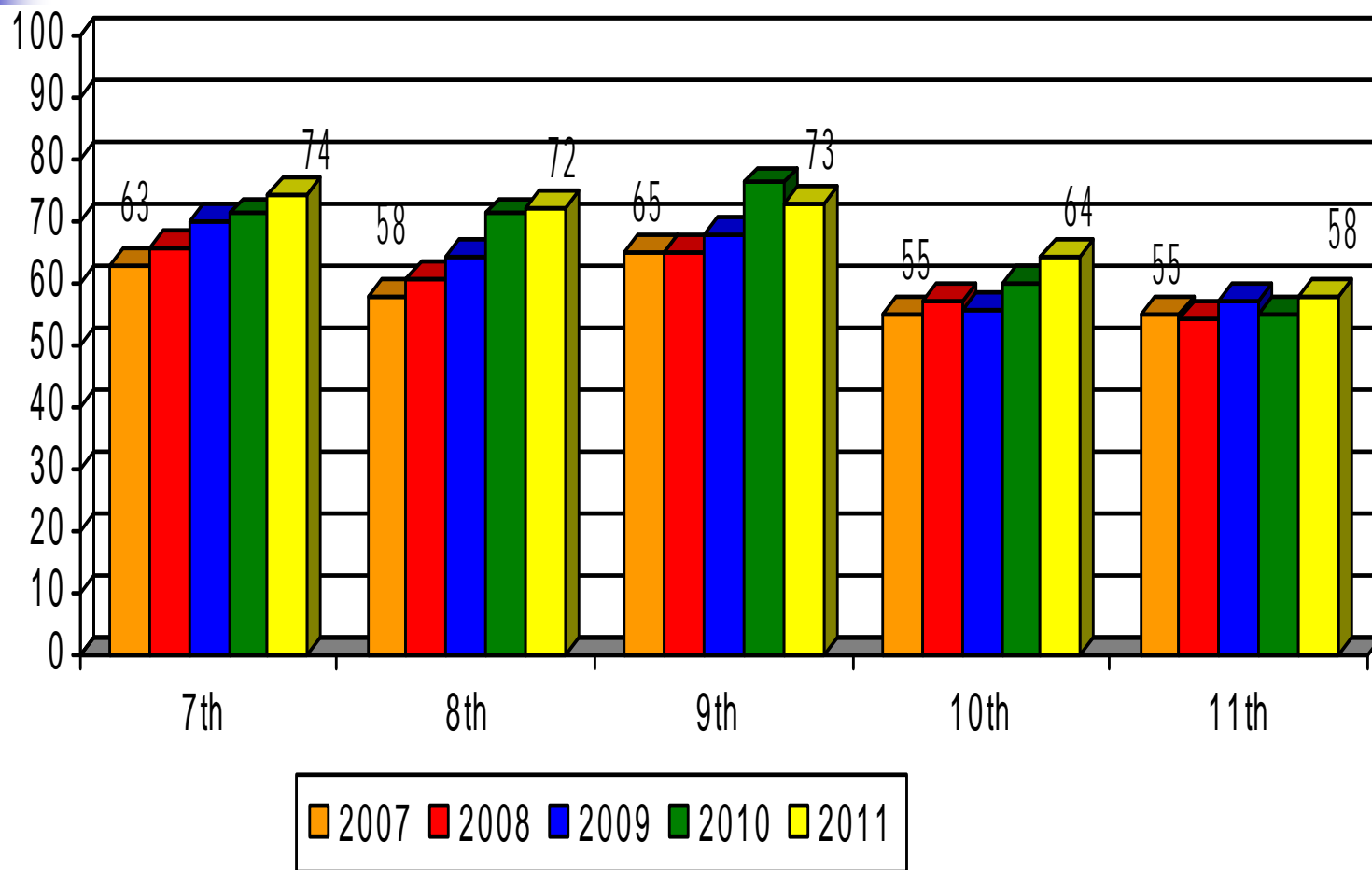


Percent of District Students Scoring Proficient or Advanced  
**English/Language Arts**  
by Grade Level  
2007 through 2011

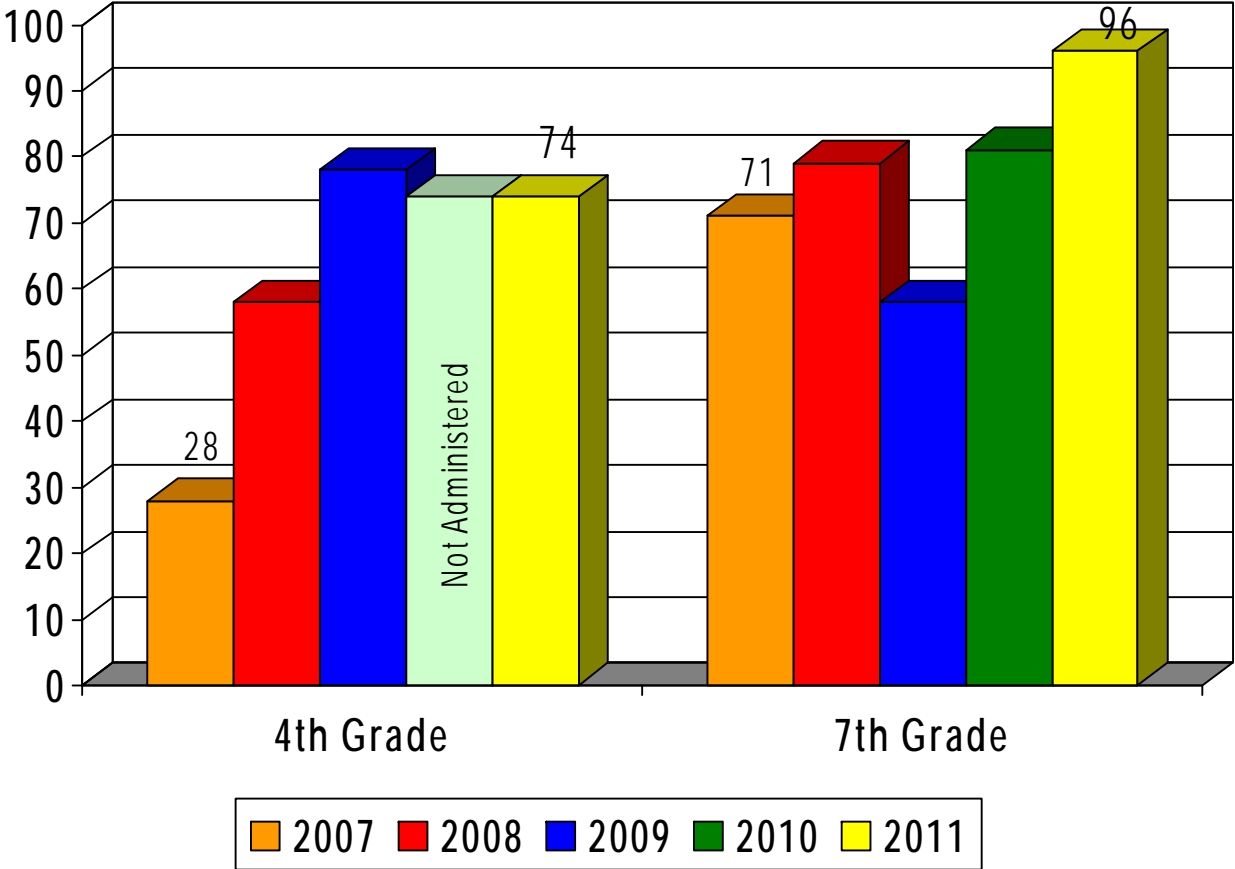
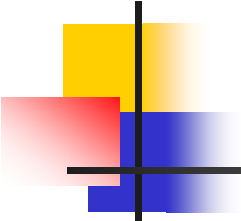


# Percent of District Students Scoring Proficient or Advanced English/Language Arts by Grade Level

2007 through 2011

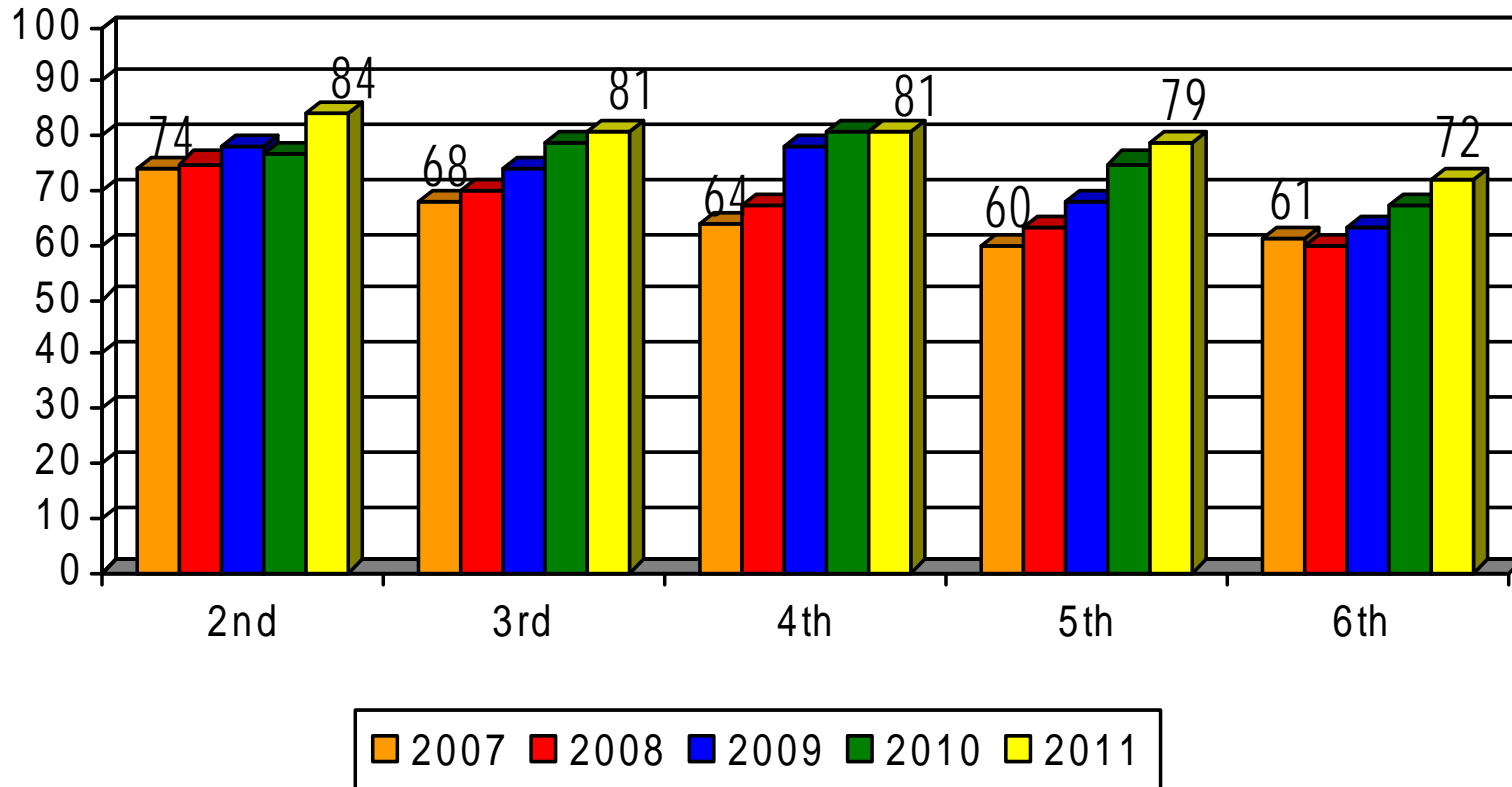


# Percent of Students Scoring 6 or Higher Writing

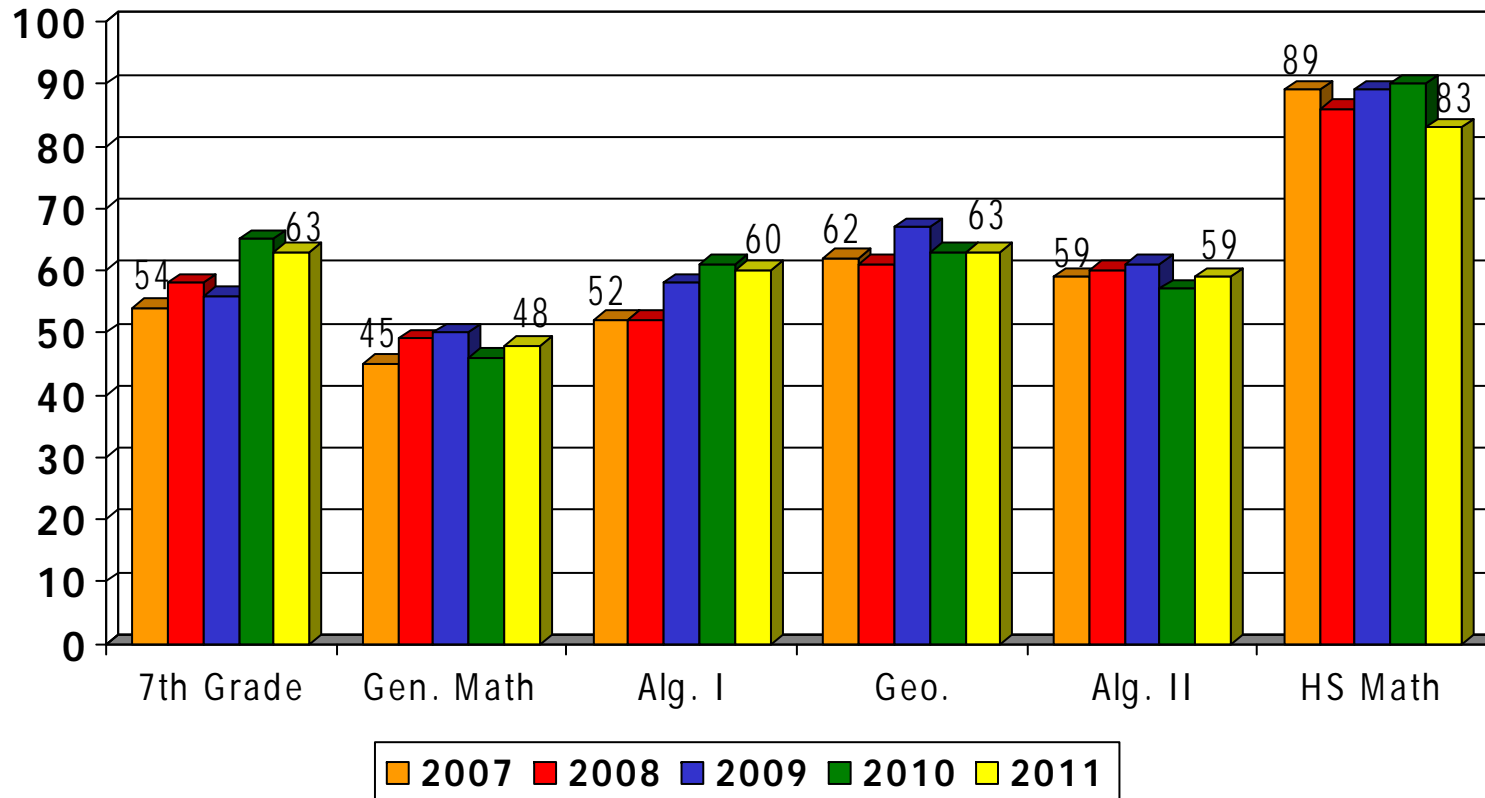


# Percent of District Students Scoring Proficient or Advanced Mathematics by Grade Level

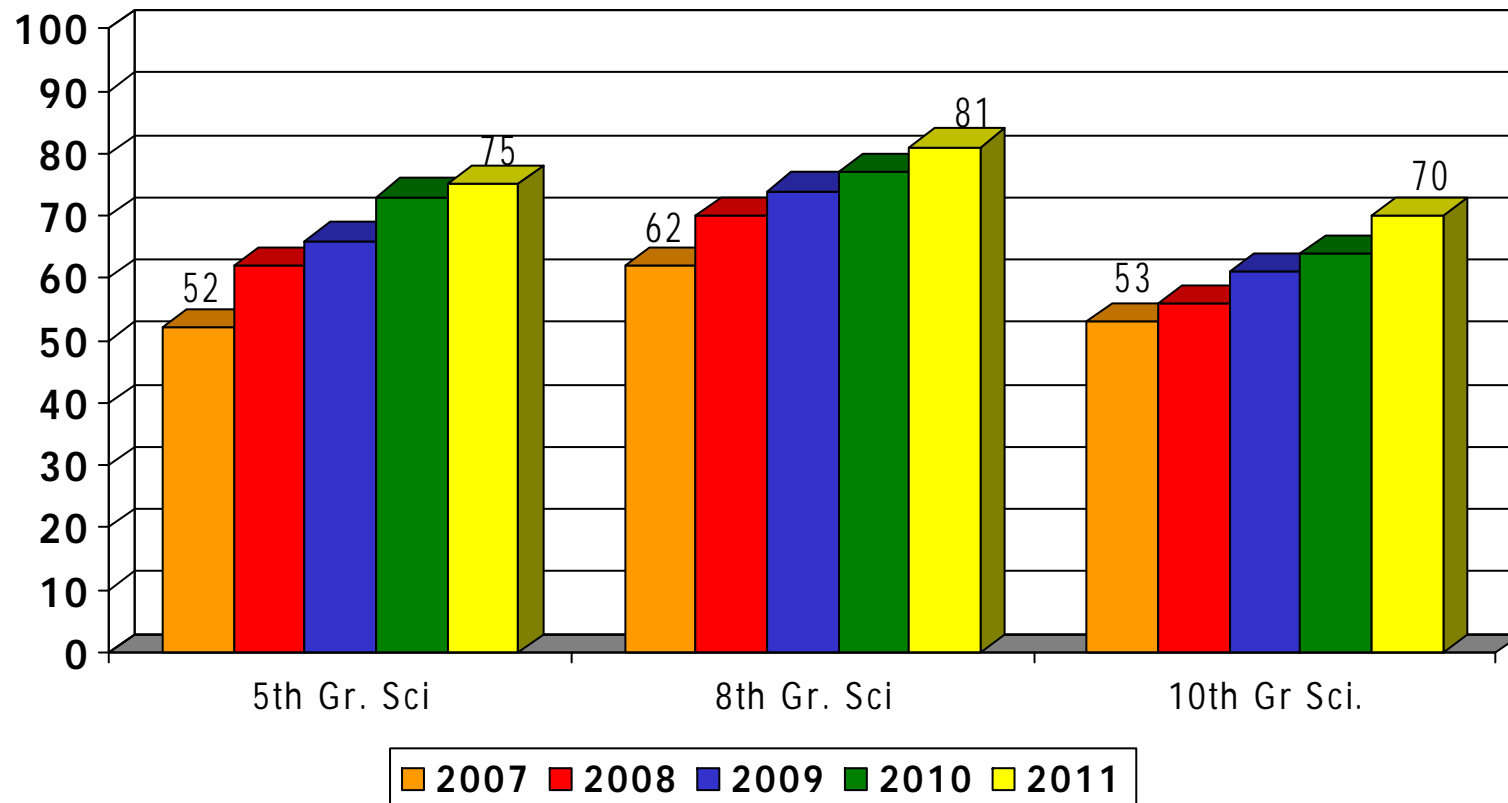
2007 through 2011



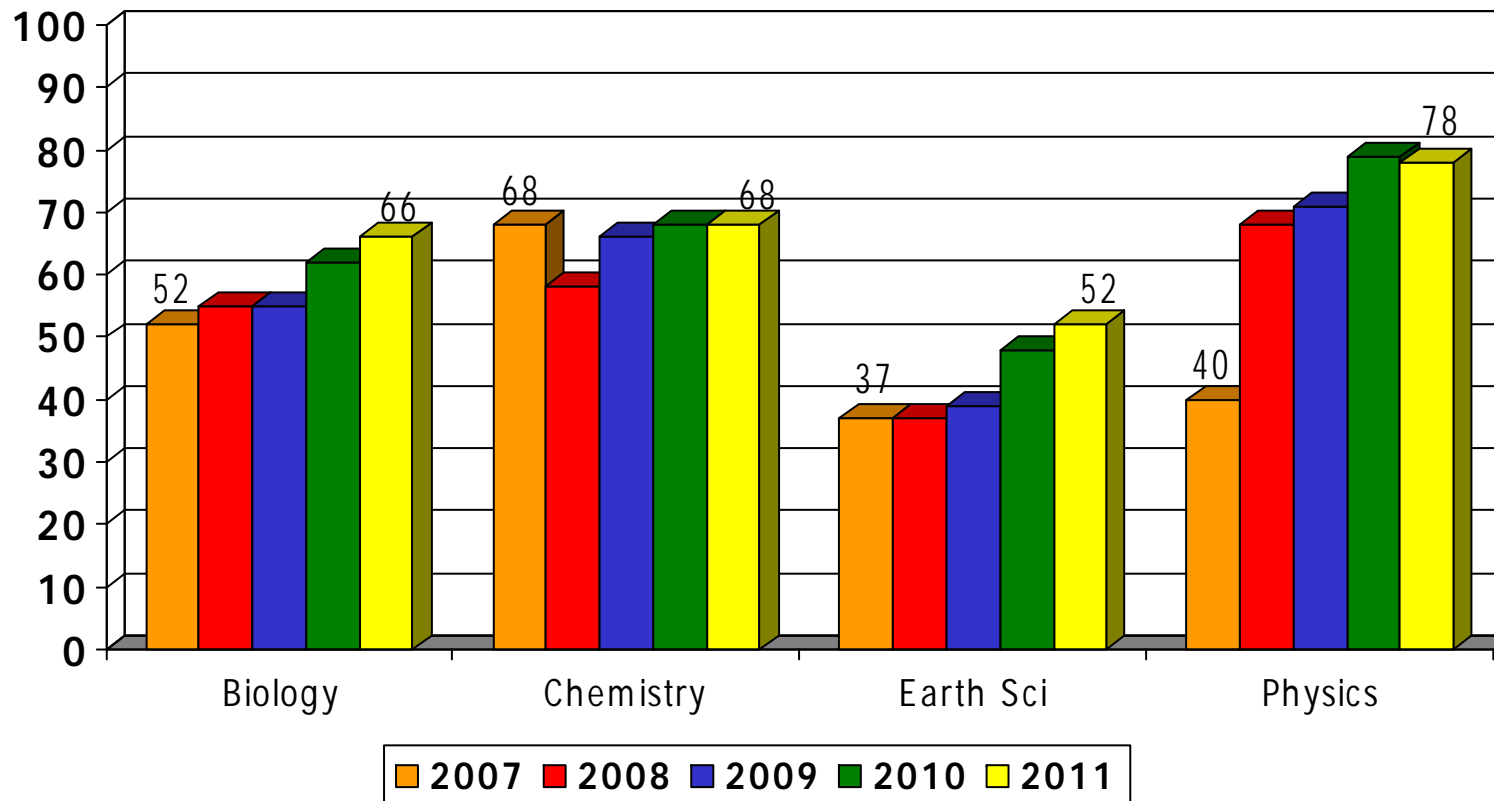
# Percent of District Students Scoring Proficient or Advanced Mathematics 2007-2011



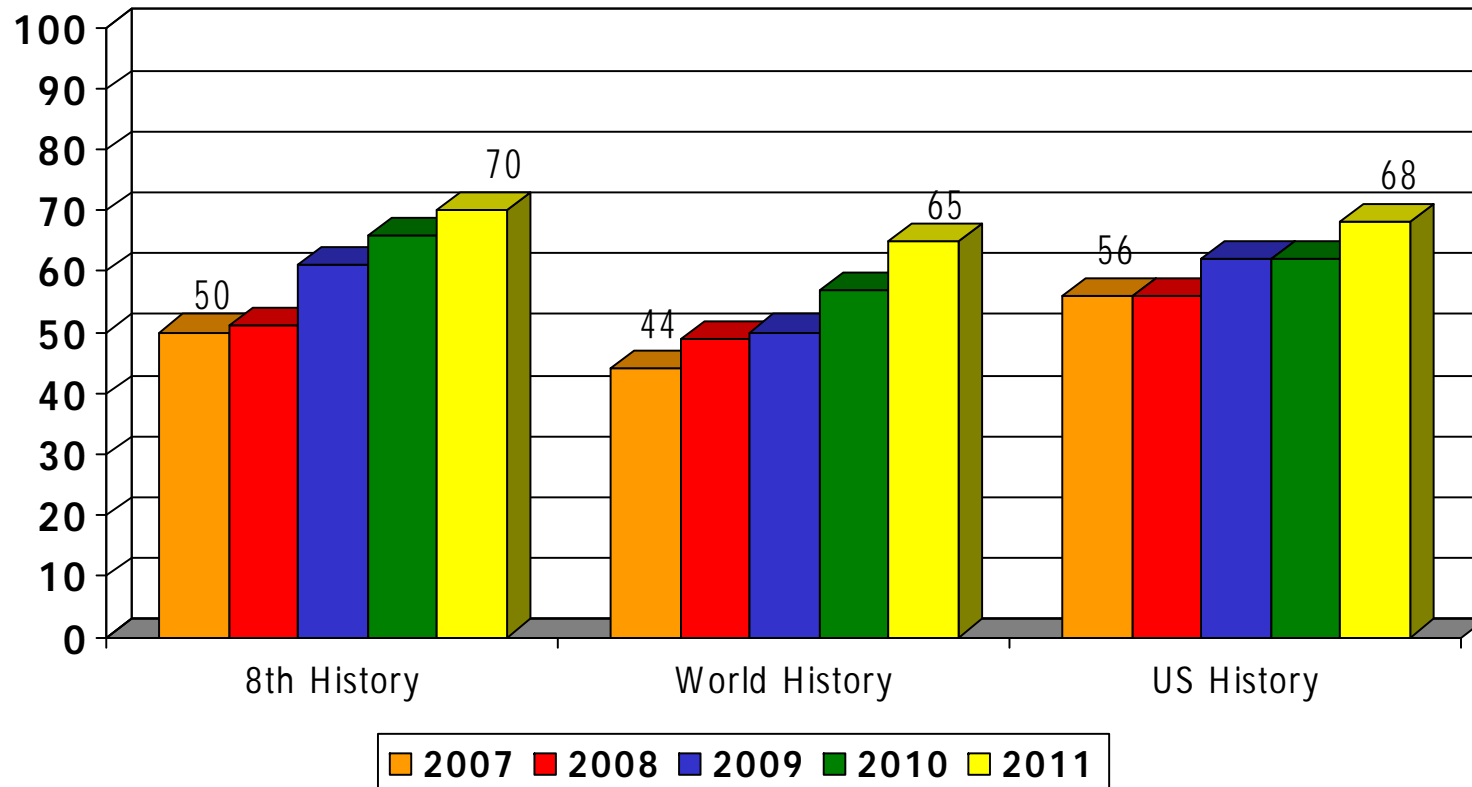
# Percent of District Students Scoring Proficient or Advanced NCLB Science 2007-2011



# Percent of District Students Scoring Proficient or Advanced End of Course Science 2007-2011



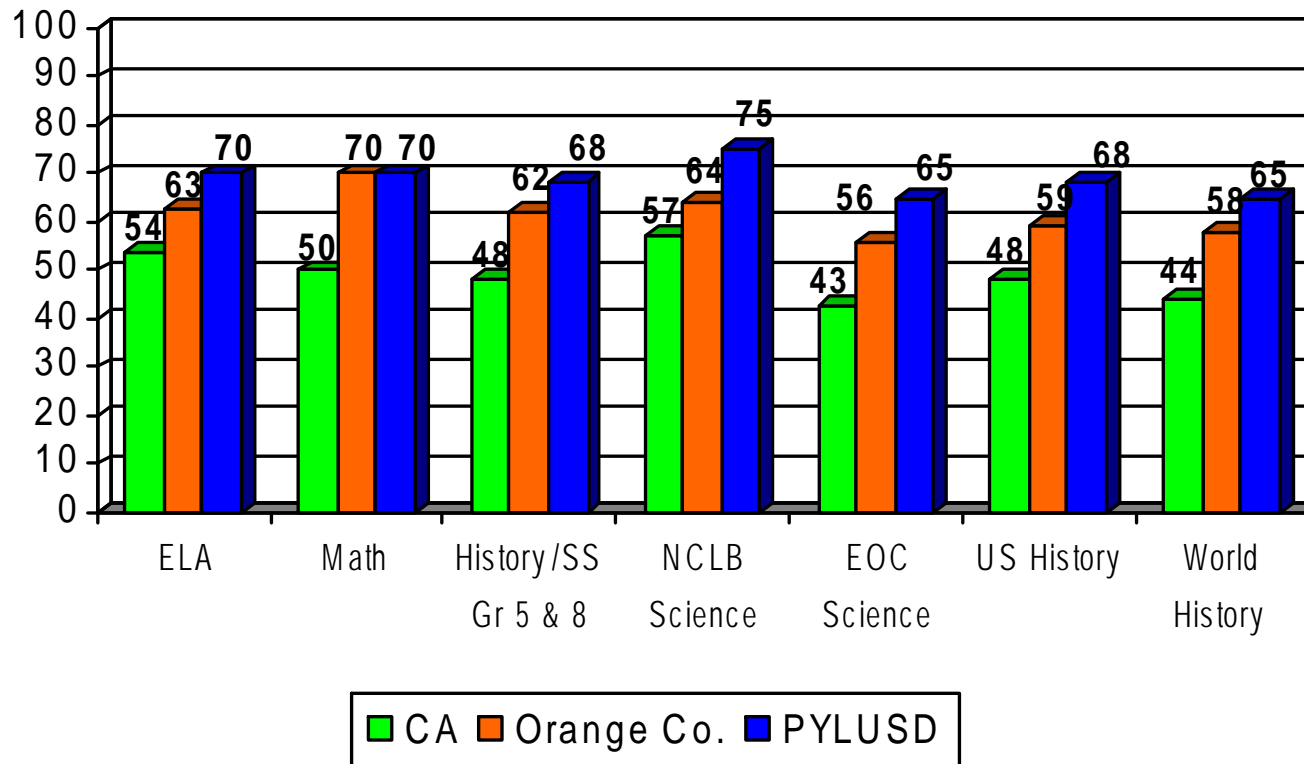
# Percent of District Students Scoring Proficient or Advanced History/Social Science 2007-2011



# Percent of Students Scoring Proficient or Advanced

## California, Orange County, and PYLUSD

Spring 2011



# Numerically Significant Subgroups

Subgroup	2010 Subgroup Base API	2011 Subgroup <i>Estimated</i> API	Difference
African American	824	807	-17
Asian	945	955	+10
Filipino	898	903	+5
Hispanic	767	785	+18
White	881	889	+8
Socioeconomically Disadvantaged	754	769	+15
English Learners	724	745	+21
Students with Disabilities	651	673	+22
<b>All Students</b>	<b>848</b>	<b>858</b>	<b>+10</b>